



# Strategic Policy & Performance Council Meeting

Feb. 16, 2022

# A Closer Look: Federal Funding and State Board Initiatives



**Andrew Collins**

**Chief Operating and Financial Officer**

CareerSource Florida



**Allyce Heflin Moriak**

**Chief Financial Officer**

Florida Department of Economic Opportunity

# Workforce Innovation and Opportunity Act

Workforce development programs provide a combination of education and training services to prepare people for work and help them improve their prospects in the labor market.

Activities may include:

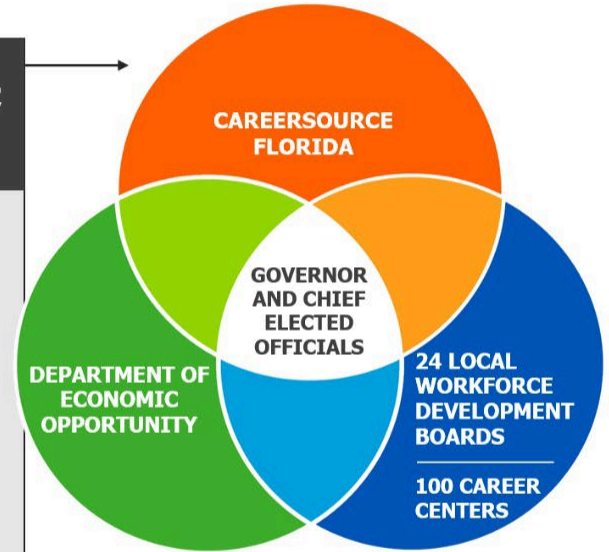
- Job search assistance
- Career counseling
- Occupational skill training
- Classroom training
- On-the-job training



# State Workforce System

## Federal Publications & Guidance; State Laws, Rules & Policy

- Public Law 113-128 (WIOA)
- Public Law 104-193 (TANF Block Grants)
- Wagner-Peyser Act of 1933, as amended
- USDOL Employment and Training Administration Final Rule 20 CFR Part 652 et al.
- FL Statues Ch. 445



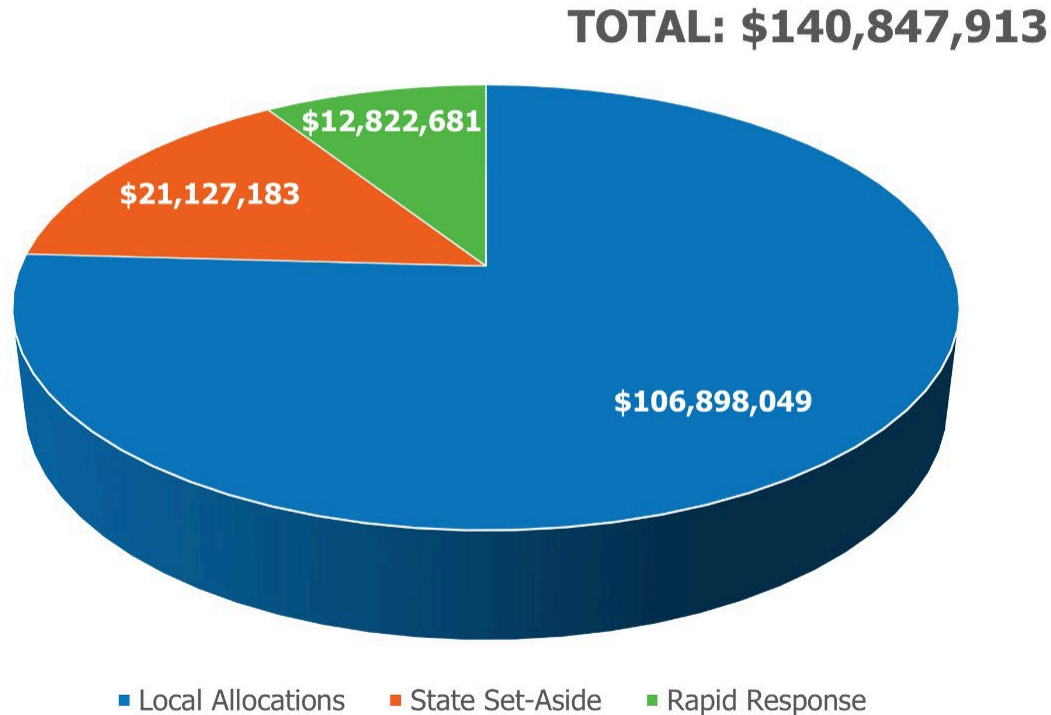
# State Formula Grant Programs

Federal laws specify formulas for distributing WIOA funds among states and for sub-state allocations, primarily based upon relative shares of workforce, unemployment and poverty factors.

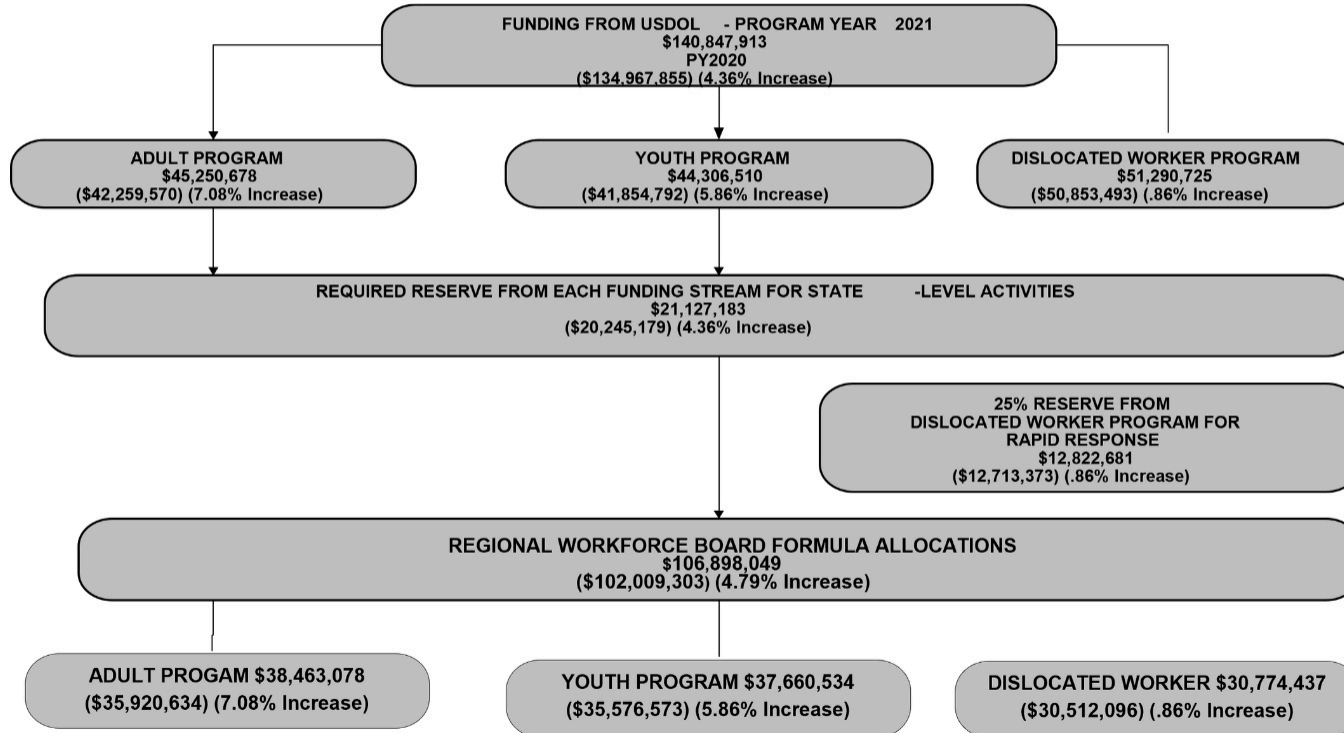
# Federal and State Funding: CareerSource Florida Network

	Fiscal Year 2021-2022	Fiscal Year 2020-2021	Difference
WIOA	\$140,847,913	\$134,967,855	\$5,880,058
TANF	\$58,300,723	\$58,132,510	\$168,213
Wagner-Peyser	\$38,157,663	\$38,224,509	-\$66,846
QRT (State)	\$7,500,000	\$9,000,000	-\$1,500,000

# Total WIOA Fiscal Year 2021-2022 Grant Award



# State Level WIOA Funding Structure





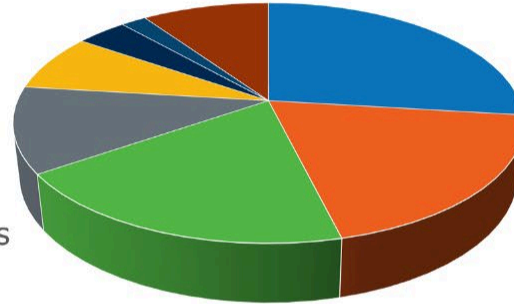
# Additional Information

- Under WIOA , 85% of the total federal award for Adult and Youth funding streams must be distributed to local workforce development boards by formula, allowing the Governor to reserve up to 15% at the state level for operational expenses, performance-based incentive payments to boards, program management and oversight, and state board-authorized initiatives.
- Similarly, WIOA Dislocated Worker funds also allow 15% to be transferred to the state-level “pool,” with another 25% of the total federal award allocated for a state-level program for rapid response assistance to dislocated workers, including emergency supplements to local workforce development boards.
- The remaining 60% of the federal Dislocated Worker funds are then distributed based on local economic factors to local workforce development boards.

# WIOA Discretionary Board Allocations

**TOTAL: \$25,649,814**

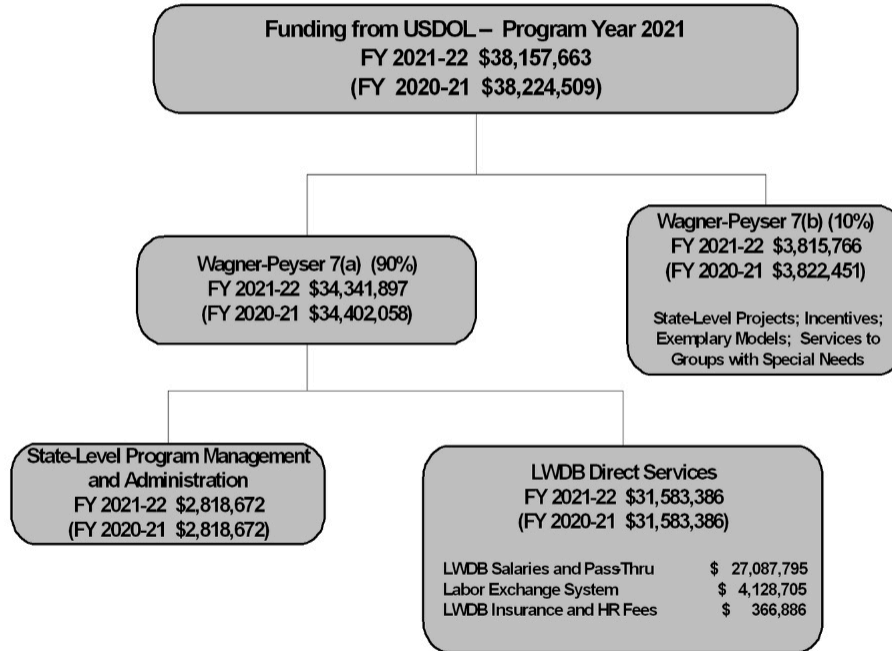
- Veterans and Military Spouses
- Low-Income Returning Adult Learners
- At-risk Floridians
- Demand-Driven Expansion of Priority Commitments
- Rural Workforce Initiatives
- Florida Ready to Work Foundational Skills Initiative
- Florida Apprenticeship Standards Builder
- Incumbent Worker Training



# Wagner-Peyser Act of 1933

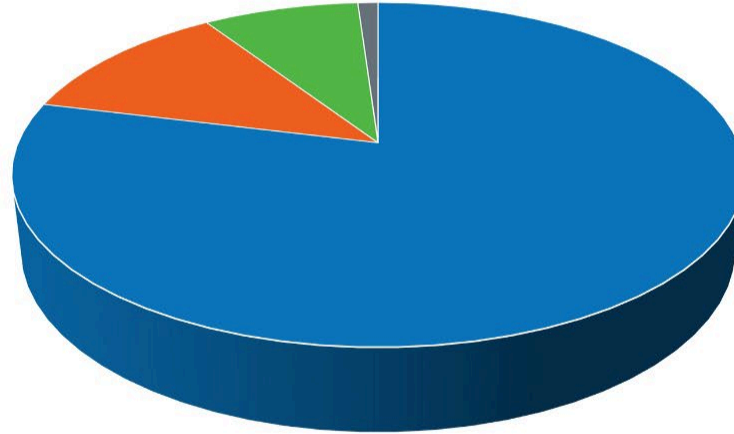
- The Wagner-Peyser Act of 1933 established a nationwide system of public employment offices known as the Employment Service. The Wagner-Peyser Act was amended by the Workforce Investment Act of 1998 and the Workforce Innovation and Opportunity Act of 2014, making the Employment Service part of the one-stop delivery system.
- Employment services are an integral part of the one-stop delivery system that provides an integrated array of high-quality services so that workers, job seekers and businesses can find needed services under one roof in easy-to-reach locations.
- Employment services are services related to a labor exchange system including job search assistance, referral and placement assistance to job seekers, reemployment services to unemployment insurance claimants and recruitment services to employers with job openings.

# Funding for Wagner-Peyser



# Wagner-Peyser 7(a) Funds

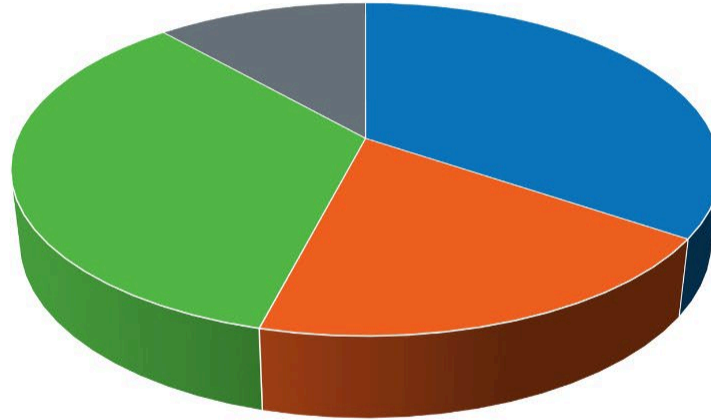
**TOTAL: \$34,341,897**



- LWDB Salaries/Pass-Through
- Labor Exchange System (Employ Florida)
- State-level Administration
- LWDB Insurance/HR

# Wagner-Peyser 7(b) Funds

**TOTAL: \$3,876,217**



- Statewide Outreach
- Military Family Employment Advocacy Program
- Substance Abuse and Reentry Navigators
- CRM System