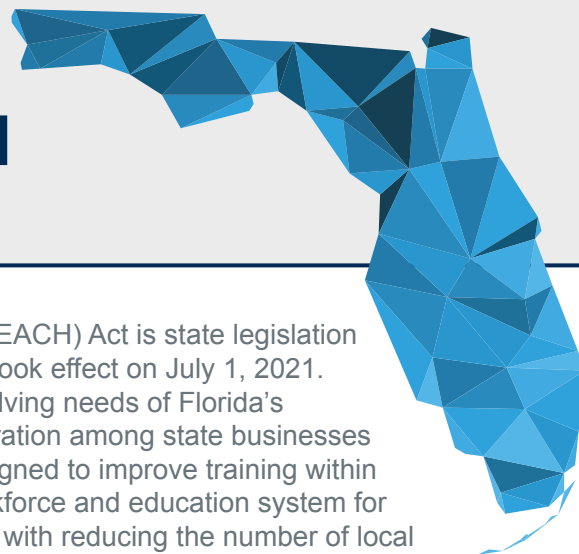


# REACH ACT ALIGNMENT EVALUATION



## WHAT

The Reimagining Education and Career Help (REACH) Act is state legislation signed into law by Governor Ron DeSantis that took effect on July 1, 2021. The REACH Act was created to address the evolving needs of Florida's economy by increasing collaboration and cooperation among state businesses and education communities. The Act also is designed to improve training within and equity and access to a more integrated workforce and education system for all Floridians. The REACH Act charges the state with reducing the number of local workforce development boards based on population size and commuting patterns.

## WHO

Under the REACH Act, this ecosystem for talent pipeline development includes CareerSource Florida, the state workforce development board; Florida's 24 local workforce development boards and the 100 career centers they oversee; the Department of Economic Opportunity; the Department of Education; the State College System; the State University System; and the Department of Children and Families. CareerSource Florida, in collaboration with the Governor's REACH Office, is leading the process to address implementation of the board reduction charge consistent with the law and through an inclusive process that engages all stakeholders.

## WHEN

As part of the REACH Act alignment evaluation process, CareerSource Florida has contracted with EY (Ernst & Young LLP) to conduct research and discovery. This includes listening to stakeholders, analyzing data, and examining solutions implemented in other states. Initial observations from Phase One were reported to the CareerSource Florida Board of Directors on June 9, 2022, with EY's [findings report](#) published on [careersourceflorida.com](https://careersourceflorida.com) in July. The second phase of this multi-phase initiative launched in September 2022. It includes a deeper analysis and more robust engagement with local stakeholders and customers across the state, including 150 online and in-person meetings/interviews. Alignment considerations that will affect the redesignation of local workforce development areas and the consolidation of local workforce development boards are anticipated to be provided to the CareerSource Florida Board of Directors by early 2023.

## WHY

The alignment evaluation process can help lead Florida's local workforce development boards in the response to the evolution in consumer preferences, workplace expectations, business needs, how people look for work, and even where and how they work. The goal is to deliver even more relevant services through system transformation and therefore improved outcomes for customers. The REACH Act emphasizes a customer-focused approach in exploring ways to better assist job seekers and businesses.

## WHERE

The alignment evaluation process encompasses all partners and processes across Florida, including CareerSource Florida, the 24 local workforce development boards, businesses and job seekers to ensure equity and access for all Floridians.

## HOW

CareerSource Florida is committed to an open and transparent process of listening to stakeholders and finding transformative solutions for workforce development in Florida. Visit the REACH Act webpage on [careersourceflorida.com](https://careersourceflorida.com) for updates on the ongoing engagement process. Please complete the Alignment Feedback Form on the webpage to provide input or comments.